



MONTHLY MEMBERSHIP PROGRESS REPORT

District N 3

Results as of: 06/30/2019

GMT: CHRIS LEWIS

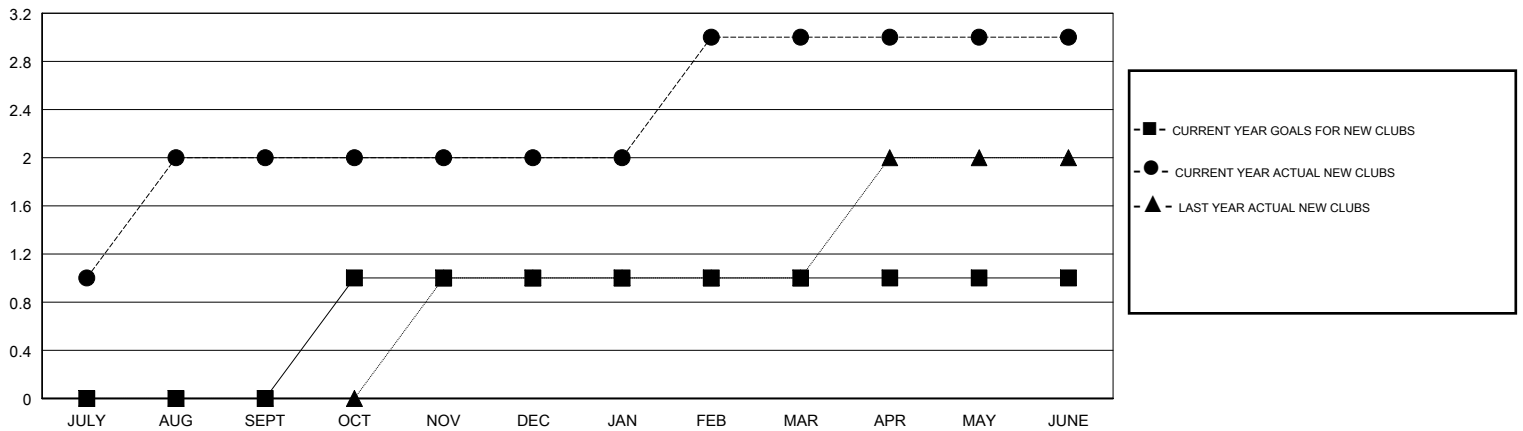
LOCATION NEWFOUNDLAND-LABRADOR

GMT CA

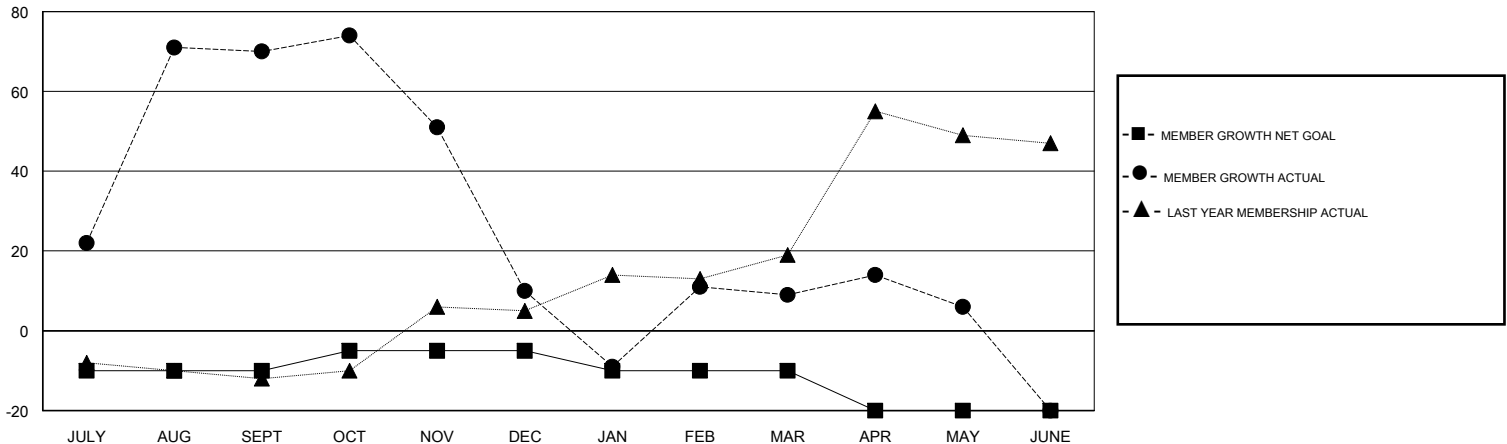
Clubs			
RESULTS FOR 2018-2019			
QUARTER	NEW CLUB GOAL	NEW CLUBS	DROPPED CLUBS
JULY/AUG/SEPT	0	2	0
OCT/NOV/DEC	1	0	1
JAN/FEB/MAR	0	1	0
APR/MAY/JUNE	0	0	0

Members			
RESULTS FOR 2018-2019			
QUARTER	MEMBER GROWTH NET GOAL	MEMBER GROWTH ACTUAL	DROPPED MEMBERS ACTUAL (including transfers)
JULY/AUG/SEPT	-10	98	27
OCT/NOV/DEC	5	15	75
JAN/FEB/MAR	-5	68	64
APR/MAY/JUNE	-10	23	49

GOALS AND ACTUAL NEW CLUBS CUMULATIVE



GOALS AND ACTUAL MEMBERS CUMULATIVE



DROPPED CLUBS: 1

30 CLUBS OF 44 ADDED 1 OR MORE NEW MEMBERS

GENDER DISTRIBUTION

MALE 648 (61.31%)
 FEMALE 409 (38.69%)
 Women Percentage Fiscal Year Goal: 36%

DROPPED MEMBERS

[CLICK HERE FOR CUMULATIVE MEMBERSHIP DATA](#)

DECEASED	11
CLUB CANCELLED	5
OTHER	199
TOTAL	215

TOTAL FAMILY UNIT MEMBERS	211
FAMILY MEMBERS PAYING HALF DUES	107